

DESCRIPTION

Line voltage die-cast aluminum designer gimbal fixtures with PAR38 light source. Yoke provides full adjustment position of light source for special aiming and dual tightening knobs assure secure lock on angle position.



LAMP

LED PAR38 E26 24W Max.

FEATURES

- Die-cast aluminum provides superior strength and rigidity.
- Low profile, aesthetic design.
- Adjustable yoke for custom aiming.
- One or two circuit track capable.

HOUSING

- Iron / die-cast aluminum construction.
- Gimbal appearance and design features.
- All edges are softened for aesthetic appearance.

YOKE

- Iron yoke connects fixture housing to electrical contact head.
- Dual plastic angle tightening knobs maintain clean, decorative appearance of the fixture and provides secure angle position.

WIRING

Teflon coated wire lead connects socket and housing to electrical contact head.

Teflon coating is durable and resists heat degradation from lamp and housing radiation.

FINISHES

Black, White and Satin Nickel heat rated baked enamel paint.

Custom painting or anodizing for special applications is also available.

Custom finishes will require lead times that vary depending on vendor schedule. Please consult factory for quotation.

Code	Series	Wire	Finish	Mounting	Wattage	Color Temperature
K2053	Track Light	02W = 2-wire 03W = 3-wire 04W = 4-wire	BK = Black WH = White SN = Satin Nickel	TM = Track Rail Mounting CM = Canopy Mounting PM = Pendant Mounting	L24 = LED 24W	28K = 2800K 35K = 3500K 50K = 5000K

ACCESORIES



K500
Global Adaptor
Finish: WH/BK



K600
Single/Two Circuit Live End
Finish: WH/BK



K601
Single /Two Circuit End Feed
Finish: WH/BK



K602
Single/Two Circuit Flexible Connector
Finish: WH/BK



K604
T-bar Attachment Clips
For T-bar Drop Ceiling
Finish: WH/BK/SN



K605
Single/Two Circuit Floating Canopy
Finish: WH/BK



K606
Single/Two Circuit Live End With Box Cover
Finish: WH/BK



K602
Single/Two Circuit Flexible Connector
Finish: WH/BK



K608
Mini Coupling
Finish: WH/BK



K609
Single/Two Circuit T-Connector
Finish: WH/BK



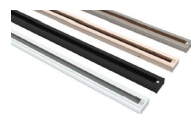
K610
Single Circuit 90° Connector
Finish: WH/BK



K611
Single/Two Circuit X-Connector
Finish: WH/BK



K612
Live End With Cord & Plug
Finish: WH/BK
Available in 2-wire, 3-wire, 4-wire



K5-3
Single Circuit/Two Circuit Track
Single Circuit Track is rated for 2400W
Features 12-gauge copper conductors and a separate ground conductor. Two circuit track includes 12-gauge copper conductors and features a double load capacity at 4800W max.
Single/Two Circuit Track is available in white, black and satin nickel finishes, and in 4, 6, and 8-foot sizes, and can also be field cut to your preference.